

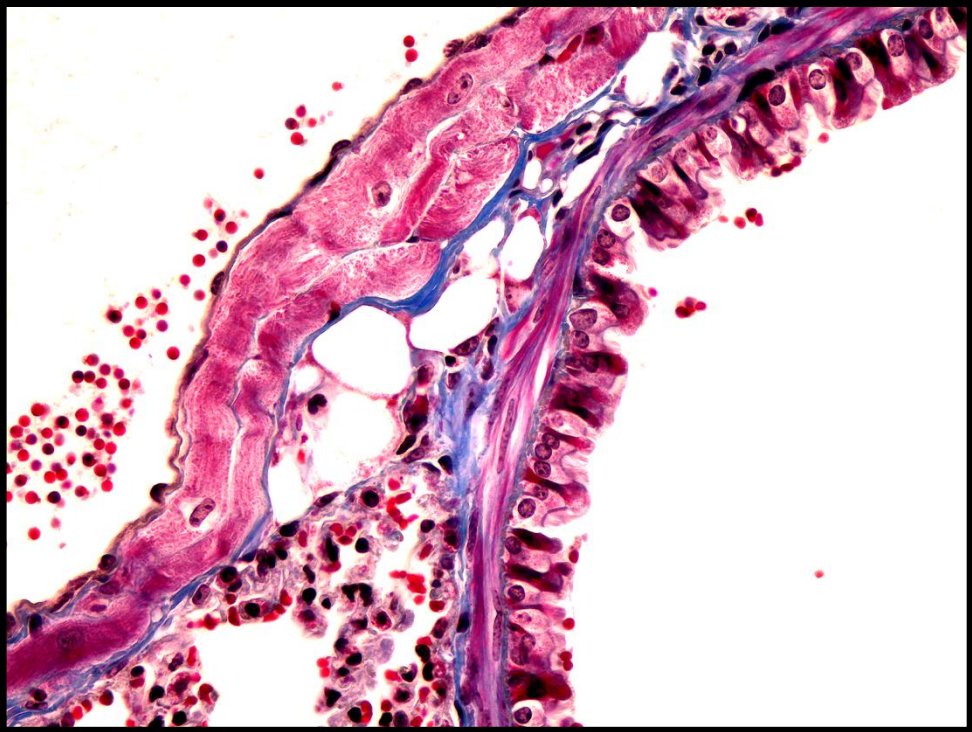
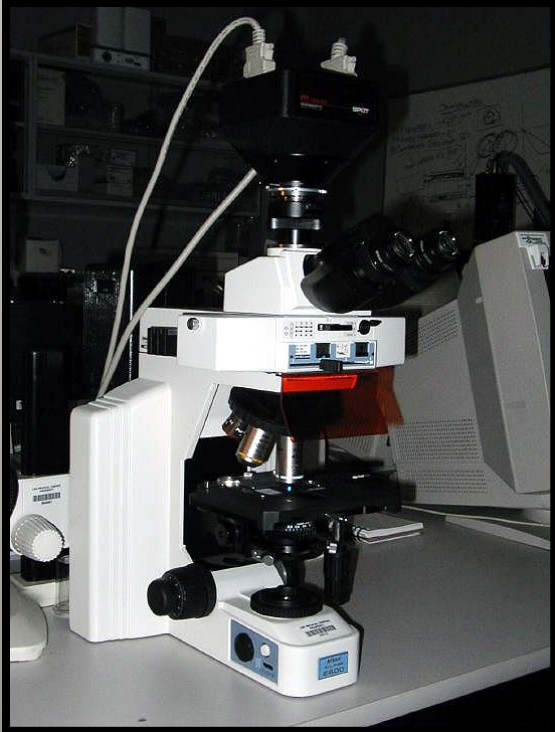


Gene Therapy
LSUHSC
New Orleans

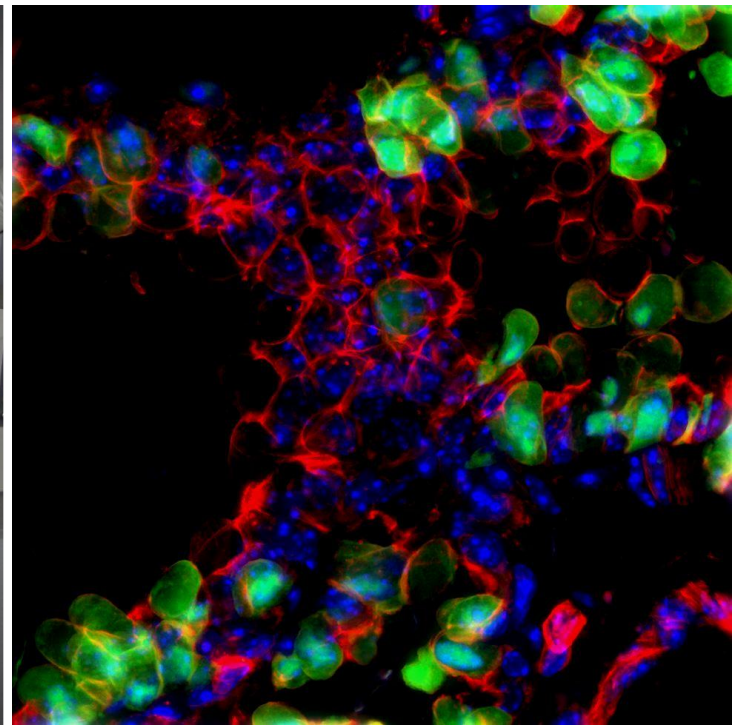
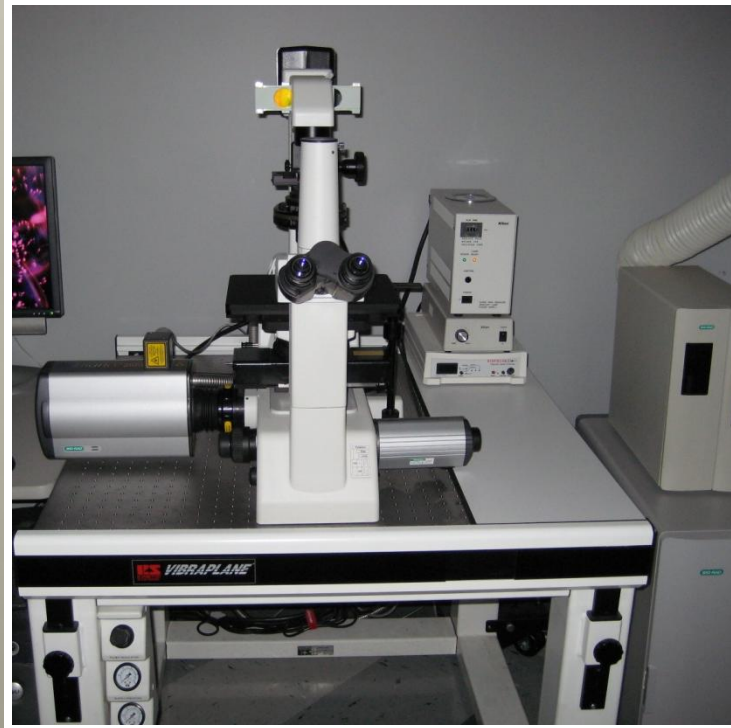


Morphology & Imaging Core

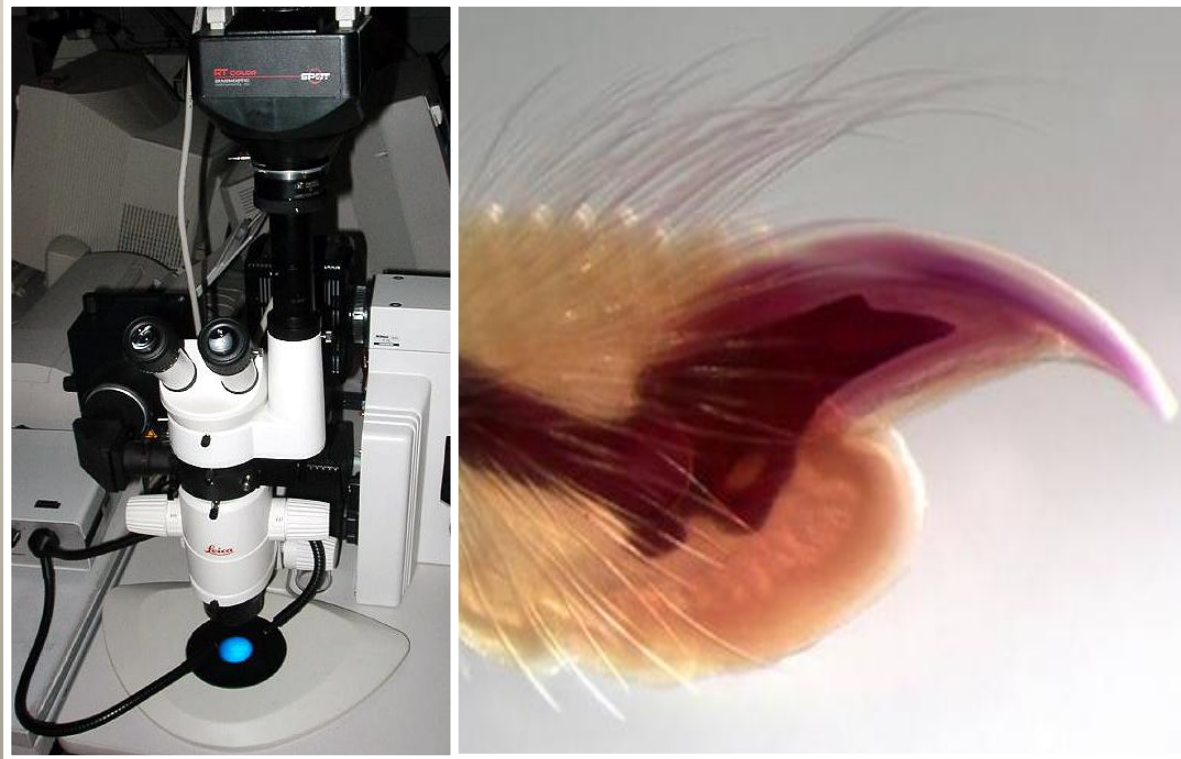
mic@lsuhsc.edu



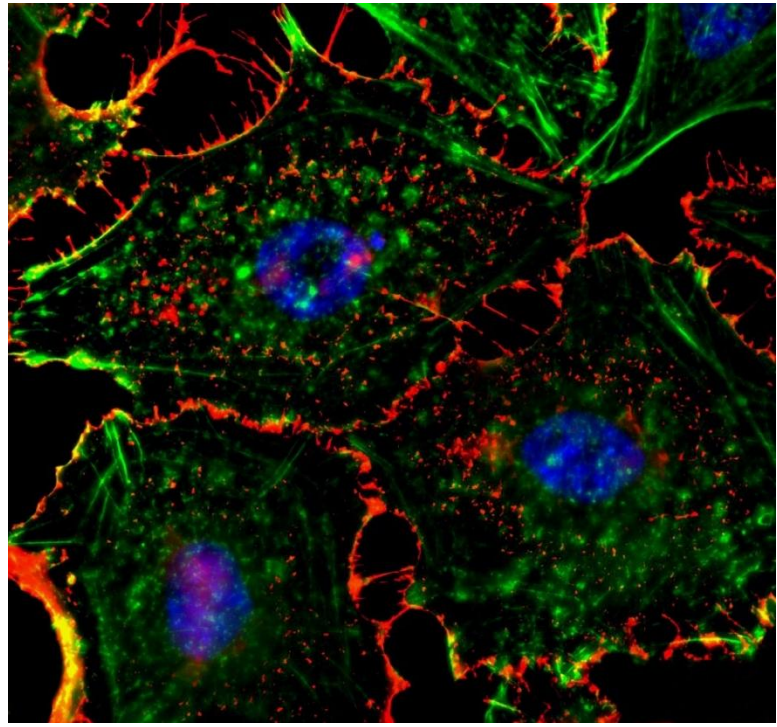
Nikon Eclipse E600 upright



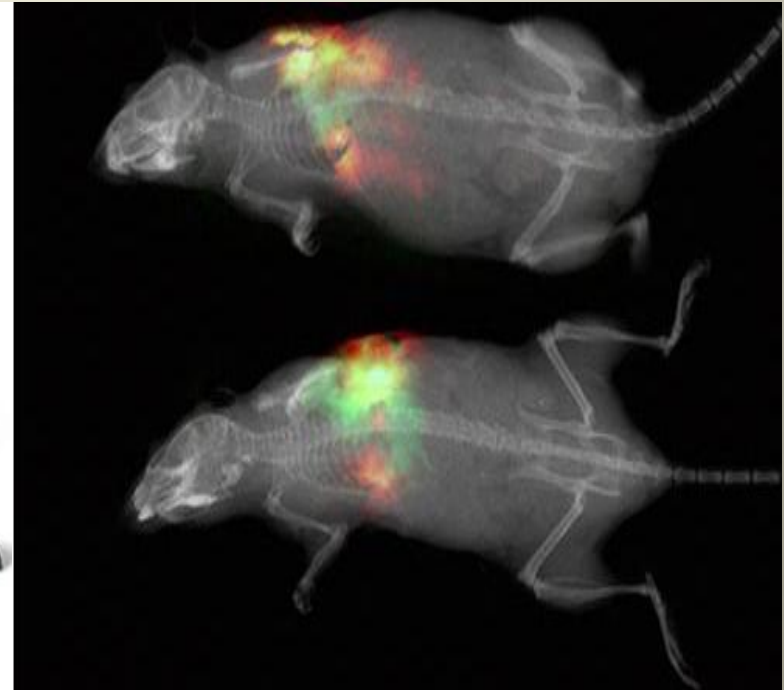
Bio-Rad Radiance 210:
laser scanning confocal



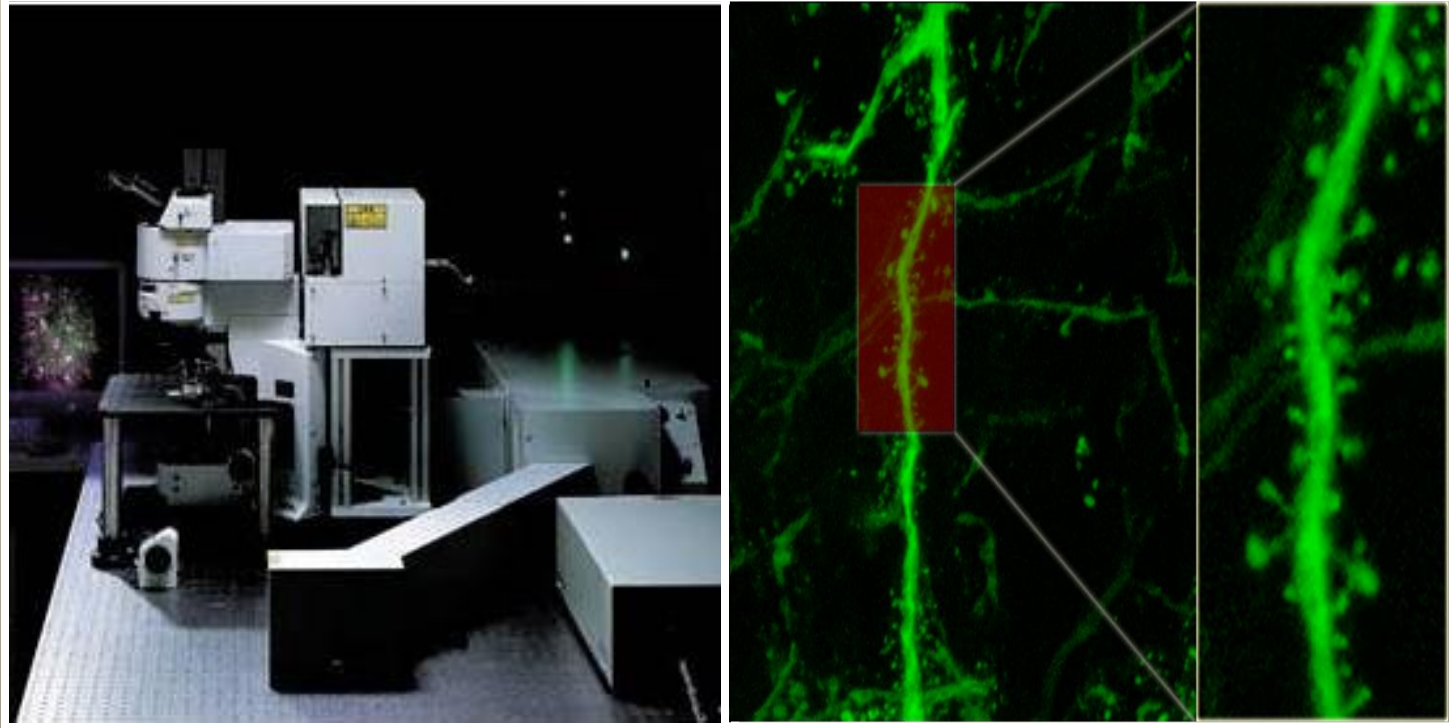
Leica Mz75 stereomicroscope



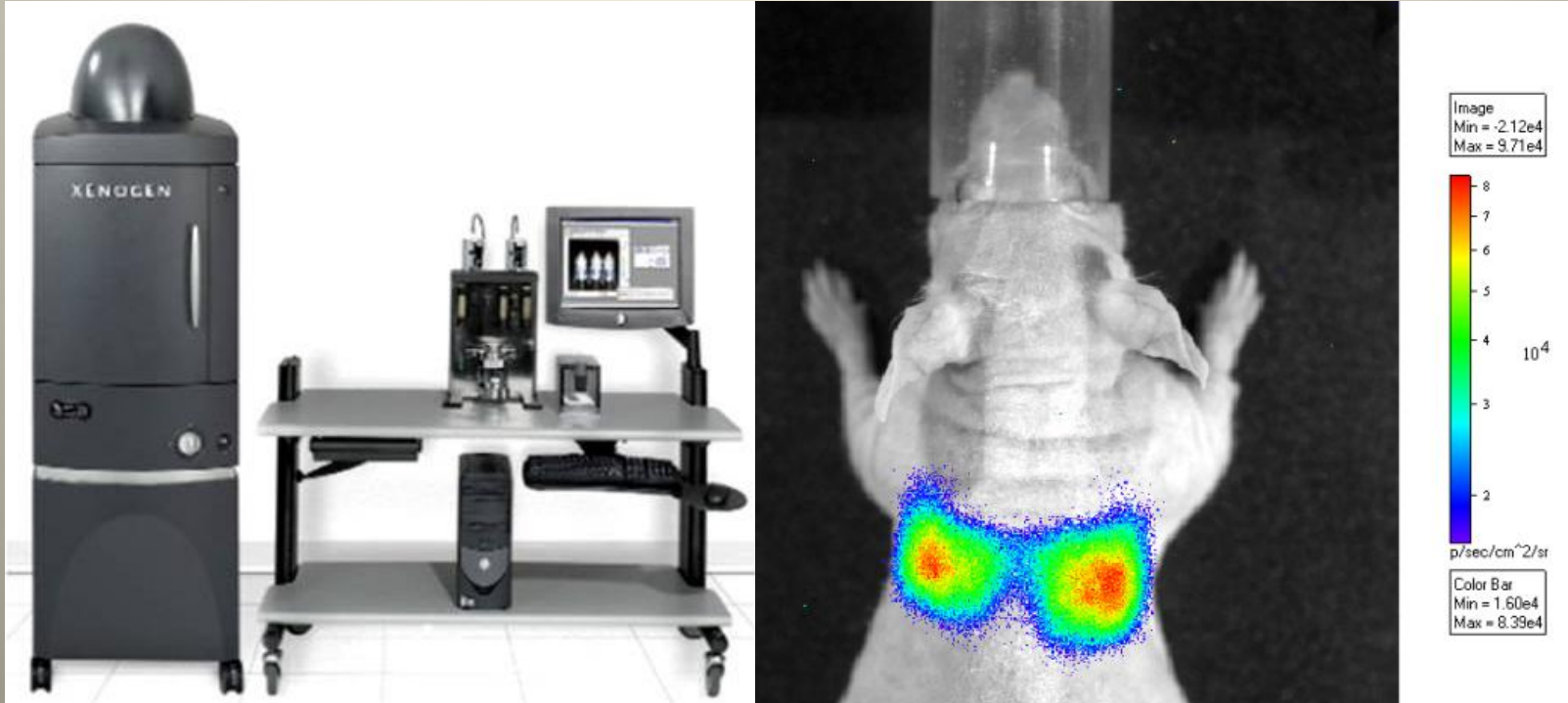
Leica DMRXA:
deconvolution systems



Kodak Image Station FX



Olympus Fluoview 1000 MPE



Xenogen IVIS 200

Services

| Routine Histopathology | Special Preparations | Microscopy & Analysis |
|--|---|---|
| <ul style="list-style-type: none"> • Paraffin processing • Paraffin embedding • Paraffin sectioning • Frozen sections • Vibratome sections • Whole mounts • H&E stain • Organ dissection | <ul style="list-style-type: none"> • Immunohistochemistry (peroxidase / AP) • Immunofluorescence (single to quadruple) • In situ hybridization (DNA / RNA) • Whole mount detections • Multiple special stains (chemical / dye based) • Enzyme histochemistry • Antibody optimization | <ul style="list-style-type: none"> • Brightfield • 2D Epifluorescence • Stereomicroscopy • Deconvolution • Confocal • 4D timelapse • FRET • Calcium Transfer • Morphometry • (Quantitative) co-localization • Montage generation |



Gene Therapy
LSUHSC
New Orleans



Morphology & Imaging Core

mic@lsuhsc.edu